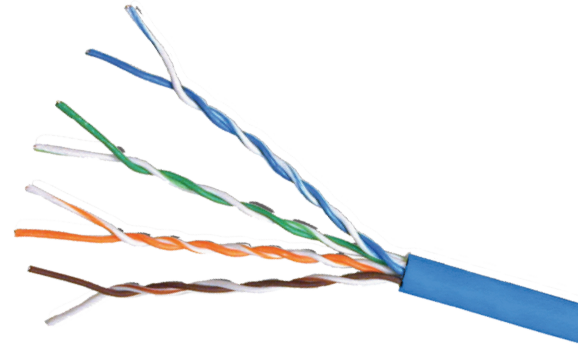


Cat 5e Plenum 350MHz Solid Conductor Bulk Cable

Category 5e Plenum 350MHz local area network cable. 4 unshielded twisted pairs, solid 24 awg. UL listing NEC,CMP/MPP. Nominal O.D. is 0.206 inches. Meets all requirements as set forth in the Telecommunications Industry Association's standard 568 & 570 recommendations.



Features

- 4-pair unshielded twisted pair cable
- 24AWG solid bare copper conductor
- Meets or exceeds Cat5e specifications
- Rated to 350Mhz to provide additional performance and bandwidth
- Exceeds and above the basic requirements of Cat5e 100Mhz standards
- High-density polyethylene insulation, PVC jacket
- Foot-marked cable packaged in EZ pull box
- Ideal for 10Base-T(IEEE 802.3), 100Base-TX(IEEE 802.3u), 1000Base-TX, 100 Vg-AnyLAN(IEEE 802.12), Token Ring(IEEE 802.5), TP-PMD(ANSI X3T9.5), 350 Mbps CDDI, ATM 155, Voice and Multimedia
- CMP rated for use in walls and conduit in ceiling
- Verified compliant with EIA/TIA standards by ETL
- CSA listed



Specifications

Conductors: 4 Twisted Pairs 24 AWG Plenum Rated solid bare copper cable
 Bandwidth: Supports voice/data/video distribution applications up to 350 MHz
 Standards: Meets all Cat5E TIA/EIA standards, Verified to EIA/TIA 568B.2
 Conductor DC Resistance: 89 Ohm/km (maximum)
 Insulation Resistance: 100 Ohm/km (minimum)

Outer Diameter: 5.3mm
 UL Rating: CMP
 Jacket: Plenum
 Jacket Color: Blue
 RoHS Compliant: Yes
 Warranty: Lifetime

Cat 5e Plenum 350MHz Solid		
C5EP350B-1000	Solid Blue	1000 ft. Roll
C5EP350G-1000	Solid Grey	1000 ft. Roll
C5EP350W-1000	Solid White	1000 ft. Roll