

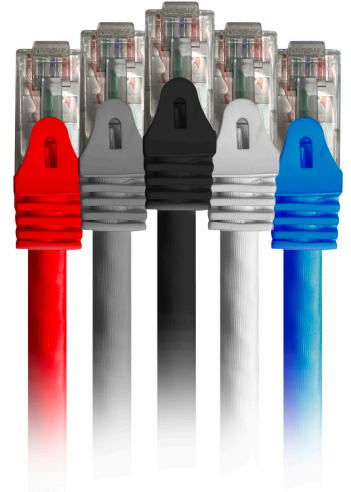


## Cat6a Unshielded (UTP) Snagless Ethernet Patch Cables

Comprehensive's Cat6a Unshielded (UTP) Ethernet Patch Cables are 10-Gigabit enabled data transmission over a 4-conductor 24AWG twisted-pair copper cable, which allows connecting distances of up to 100ft. It is a cost-effective standard UTP cable with guaranteed performance for connecting computers with routers, extenders, switches, patch panels and more.

Comprehensive's Cat6a Unshielded Ethernet cables are the perfect cable for all your data centers, LAN, WAN and other networking applications. Applications include Gigabit 1000 BASE-T; 100 BASE-T; 10 BASE-T (IEEE 802.3), 4/16 Mbps Token Ring (IEEE 802.5); 100 VG-AnyLAN, 100 Mbps TP-PMD (ANSI X3T9.5); 55/155 Mbps A, 622A and T1 Voice.

Comprehensive Cat6a UTP Snagless Patch Cables are available in a variety of colors for easy color-coding in network installations and trouble shooting. This cable is fully backward compatible to Category 6 & 5e. All the Cat6a UTP cables are CM rated, RoHS, Prop65 compliant and covered by our Lifetime Warranty.



### Up to 10 Gigabit Fast Data Transmission

The high performance Cat6a 24AWG Unshielded (UTP) patch cables provide up to 10 Gigabit data transmission for network connectivity.

### Compliant with TIA/EIA standards

Comprehensive's Cat6a Unshielded (UTP) Snagless Patch Cables meet all Cat6a TIA/EIA standards and greatly reduces loss compared to standard 100 MHz cable.

### Snagless Design with Premium Construction

These Cat6a Unshielded (UTP) network cables have a molded low profile, snagless boot that makes installing these cables quick and easy every time while providing superior strain relief for years of worry-free performance. Comprehensive's Cat6a Unshielded (UTP) cables provide superior protection from electromagnetic (EMI) interference utilizing high quality shielding.

### Multiple Colors Make Installations Easy

Comprehensive Cat6a Unshielded (UTP) cables are available in multiple popular colors including black, blue, grey, white, red and more to make it easy to color-code all your installations.

### Peace of Mind Comes Standard

Value is knowing a product you buy today, will work for you tomorrow and in the years to come. At Comprehensive, we are dedicated to providing you with the best cable and connectivity products money can buy at a fair price. But talk is cheap-which is why we put our money where our mouth is and cover all of our cables with our exclusive Worry-Free Lifetime Warranty. So when you purchase a Comprehensive cable product, you can be assured it will keep on working and last a lifetime.



	Black	Blue	White	Grey	Red
1ft	CAT6A-UTP-1BLK	CAT6A-UTP-1BLU	CAT6A-UTP-1WHT	CAT6A-UTP-1GRY	CAT6A-UTP-1RED
3ft	CAT6A-UTP-3BLK	CAT6A-UTP-3BLU	CAT6A-UTP-3WHT	CAT6A-UTP-3GRY	CAT6A-UTP-3RED
5ft	CAT6A-UTP-5BLK	CAT6A-UTP-5BLU	CAT6A-UTP-5WHT	CAT6A-UTP-5GRY	CAT6A-UTP-5RED
7ft	CAT6A-UTP-7BLK	CAT6A-UTP-7BLU	CAT6A-UTP-7WHT	CAT6A-UTP-7GRY	CAT6A-UTP-7RED
10ft	CAT6A-UTP-10BLK	CAT6A-UTP-10BLU	CAT6A-UTP-10WHT	CAT6A-UTP-10GRY	CAT6A-UTP-10RED
15ft	CAT6A-UTP-15BLK	CAT6A-UTP-15BLU	CAT6A-UTP-15WHT	CAT6A-UTP-15GRY	CAT6A-UTP-15RED
25ft	CAT6A-UTP-25BLK	CAT6A-UTP-25BLU	CAT6A-UTP-25WHT	CAT6A-UTP-25GRY	CAT6A-UTP-25RED
50ft	CAT6A-UTP-50BLK	CAT6A-UTP-50BLU	CAT6A-UTP-50WHT	CAT6A-UTP-50GRY	CAT6A-UTP-50RED
100ft	CAT6A-UTP-100BLK	CAT6A-UTP-100BLU	CAT6A-UTP-100WHT	CAT6A-UTP-100GRY	CAT6A-UTP-100RED

PATCH CABLES



# Cat6a Unshielded (UTP) Snagless Ethernet Patch Cables

## Features

- The Cat6a unshielded (UTP) cable supports up to 10 Gb data transmission up to 100 feet
- Constructed from high quality twist-paired cable to efficiently reduce alien cross talk performance -not affected by wire in adjacent cable
- Gold Plated 50u RJ45 2 row Connectors ensure clear transmission by eliminating signal loss due to corrosion.
- Snagless Mold construction protects the RJ45 plastic tabs from damage during installation.
- CM Graded PVC Jacket
- Our CAT6a cables are certified to handle Gigabit Ethernet with a bandwidth of up to 600 MHz.
- UL Listed, complies with TIA/EIA 568B.2 and adheres to ISO/IEC 11801.
- Backward compatible with CAT6 and CAT5e equipment
- Lifetime warranty

## Specifications

### Performance & Resolution

Data Speed: Supports voice/data/video distribution applications up to 500 MHz

Ethernet Capability: 10Gbit/s transmission

Max Distance: Up to 100 feet

Performance Grade: Pro Grade

Signal Technology Version: Category 6a

### Connections

Connector Side 1: RJ45 Male

Connector Side 2: RJ45 Male

### Environmental

Humidity: 5%-95%

Storage Temperature: -20°C to 70°C

Operating Temperature: -10°C to 60°C

### Physical Characteristics

Bend Radius: 2.9"

Cable Outer Diameter (OD): 6.9mm

Conductors: 4 Twisted Pairs bare copper stranded cable

Color: Black, Blue, Grey, White, Red

Connector Finish: Copper alloy plated with 50u gold

Connector Material: Polycarbonate

Dimensions (W x H x D) RJ45 connector: 1.5" (W) x 0.68" (H) x 0.46" (L)

Directional: No

Gauge (AWG): 24AWG

Jacket Type: PVC

Packaging: Ziplock Bag

Shielding: Unshielded w/ PVC cross separator

### Power & Electrical

DC Resistance: 9.38Ω/100m

Insulation Resistance: 100 Ω /km

### Regulatory

Certification: TIA/EIA568-B.2-10 and ISO/IEC 11801

CE: No

CL Rated: CM rated

Prop 65 Compliant: Yes

RoHS Compliant: Yes

UL Rated: UL rated



### Weight (Shipping)

1ft: .08lb

3ft: .15lb

5ft: .18lb

7ft: .25lb

10ft: .35lb

15ft: .45lb

25ft: .65lb

50ft: 1.5lbs

100ft: 3lbs

### Warranty

Lifetime

PATCH CABLES