



Comprehensive®
Connectivity Company

CDA-HDC12018G

Pro AV/IT HDMI 4K60Hz UHD 1x2 Distribution Amplifier Splitter
with EDID Management, PoC, HDMI Loop-Out, Daisy chainable
up to 230ft over Cat6



User Manual

VER 1.0

Thank you for purchasing this product

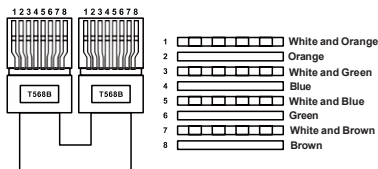
For optimum performance and safety, please read these instructions carefully before connecting, operating or adjusting this product. Please keep this manual for future reference.

Surge protection device recommended

This product contains sensitive electrical components that may be damaged by electrical spikes, surges, electric shock, lighting strikes, etc. Use of surge protection systems is highly recommended in order to protect and extend the life of your equipment.

Caution

The product requires the use of UTP connectors. Please connect in direct interconnection method and do not cross connect.



Direct Interconnection Method

Table of Contents

1. Introduction.	1
2. Features.	1
3. Package Contents.	1
4. Specifications.	2
5. Operation Controls and Functions.	3
6. Application Example.	5

1. Introduction

Comprehensive's CDA-HDC12018G is a HDMI 1x2 hybrid splitter extender that distributes 1x HDMI source signal to 2x HDMI display simultaneously over cat6 cable up to 230ft, this HDMI hybrid splitter extender supports resolutions up to 4K @60Hz (4:4:4) 18Gbps and also offers advanced EDID management for smooth connectivity between source and display compatibility.

2. Features

- HDMI 2.0b, HDCP2.2/HDCP1.4 compliant.
- Supports 18Gbps video bandwidth.
- Supports video resolutions up to 4K @50/60Hz (4:4:4).
- Supports 1x HDMI source to 2x HDMI displays over cat6 cable.
- Max transmission distance is 230ft for 4K30Hz and 1080p 60Hz and 4K 60Hz at 197ft over a single cat6 cable.
- Supports PoC function, the receivers draw power from the transmitter.
- Advanced EDID management.
- Supports HDMI audio formats: LPCM 7.1CH, Dolby True HD, and DTS-HD Master Audio.
- Compact design for easy and flexible installation.
- 3 Year Worry-Free Warranty.

3. Package Contents

- ① 1× CDA-HDC12018G (HDMI Splitter ~ Extender with 2x HDMI Receivers)
- ② 1× 12V/1A Multinational Locking Power Supply
- ③ 1× 6× Mounting Ear (Tx + Rx)
- ④ 12× Machine Screw (KM3*4)
- ⑤ 1× User Manual

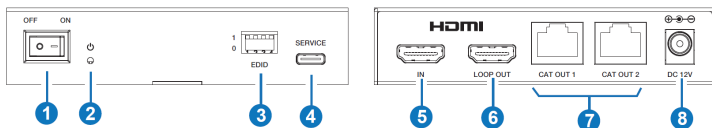
4. Specifications

Technical	
HDMI Compliance	HDMI 2.0b
HDCP Compliance	HDCP 2.2
Video Bandwidth	18Gbps
Video Resolution (Input & Output)	480i60, 576i50, 480p60, 576p50, 720p50/60, 1080i50/60, 1080p24/25/30/50/60; 640x480@60, 1024x768@60, 1280x768@60, 1280x800@60, 1280x1024@60, 1360x768@60, 1440x900@60, 1680x1050@60, 1920x1200@60RB; 3840x2160@24/25/30/50/60; 4096x2160@24/25/30/50/60;
Color Depth	8-bit, 10-bit, 12-bit(1080p@60Hz) 8-bit (4K2K@60Hz YUV4:4:4) 8-bit, 10-bit, 12-bit(4K2K@60Hz YCbCr 4:2:2/4:2:0)
Color Space	RGB, YCbCr 4:4:4 / 4:2:2 YUV 4:2:0
Audio Formats	HDMI Loop Out: LPCM, Dolby Digital/Plus/EX, Dolby True HD, DTS, DTS-EX, DTS-96/24, DTS High Res, DTS-HD Master Audio, DSD Remote End: LPCM 2.0, Dolby 5.1, DD+7.1, DTS 5.1
HDR	HDR10, HDR10+, Dolby Vision, HLG
Transmission Distance	230ft/70m for 4K@30Hz via a single CAT6 cable 197ft/60m for 4K@60Hz via a single CAT6 cable
ESD Protection	IEC 61000-4-2: ±8kV (Air-gap discharge) & ±4kV (Contact discharge)
Connection	
Transmitter	Input: 1× HDMI IN [HDMI type A, 19-pin female] Output: 1× HDMI LOOP OUT [HDMI type A, 19-pin female] 2× CAT OUT [RJ45] Control: 1× SERVICE [USB type C, update port]
Receiver	Input: 1× CAT IN [RJ45] Output: 1× HDMI OUT [HDMI type A, 19-pin female]
Mechanical	
Housing	Metal Enclosure
Color	Black
Dimensions	Transmitter: 110mm [W] × 70mm [D] × 24.5mm [H] Receiver: 81mm [W] × 49mm [D] × 25mm [H]
Weight	Transmitter: 241g; Receiver: 116g
Power Supply	DC 12V/1A
Power Consumption	7.4W (Max)

Operation Temperature	0°C ~ 40°C / 32°F ~ 104°F
Storage Temperature	-20°C ~ 60°C / -4°F ~ 140°F
Operating Humidity	20%~80% relative humidity, non-condensing
Storage Humidity	10%~90% relative humidity, non-condensing

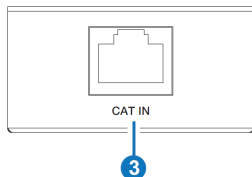
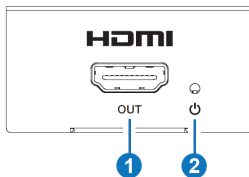
5. Operation Controls and Functions

5.1 Transmitter Panel



No.	Name	Function Description
1	POWER switch	Use this switch to power on or power off the transmitter.
2	POWER LED	When the transmitter is powered on, the red LED will be on.
3	EDID DIP switch	Use the DIP switch to set EDID. 1 is Up and 0 is down. * EDID list is shown as follow.
4	SERVICE	Firmware update port.
5	HDMI IN	HDMI signal input port, connected to an HDMI source device such as DVD or PS5 with HDMI cable.
6	HDMI LOOP OUT	HDMI loop output port, connected to HDMI display device such as TV or Monitor with HDMI cable.
7	CAT OUT (1~2)	Connect to the CAT IN port on the receiver with CAT cable.
8	DC 12V	12V/1A power input port.

5.2 Receiver Panel



No.	Name	Function Description
1	HDMI OUT	HDMI output port, connected to HDMI display device such as TV or Monitor with HDMI cable.
2	POWER LED	When the receiver is powered on, the red LED will be on.
3	CAT IN	Connect to the CAT OUT port on the transmitter with CAT cable.

* EDID Setting List:

[DIP]=1111: 4K60(444),2.0CH

[DIP]=1110: 4K60(444),5.1CH

[DIP]=1101: 4K60(444),7.1CH

[DIP]=1100: 4K60(444)_HDR,2.0CH

[DIP]=1011: 4K60(444)_HDR,5.1CH

[DIP]=1010: 4K60(444)_HDR,7.1CH

[DIP]=1001: 4K30,2.0CH

[DIP]=1000: 4K30,5.1CH

[DIP]=0111: 4K30,7.1CH

[DIP]=0110: 1080P,2.0CH

[DIP]=0101: 1080P,5.1CH

[DIP]=0100: 1080P,7.1CH

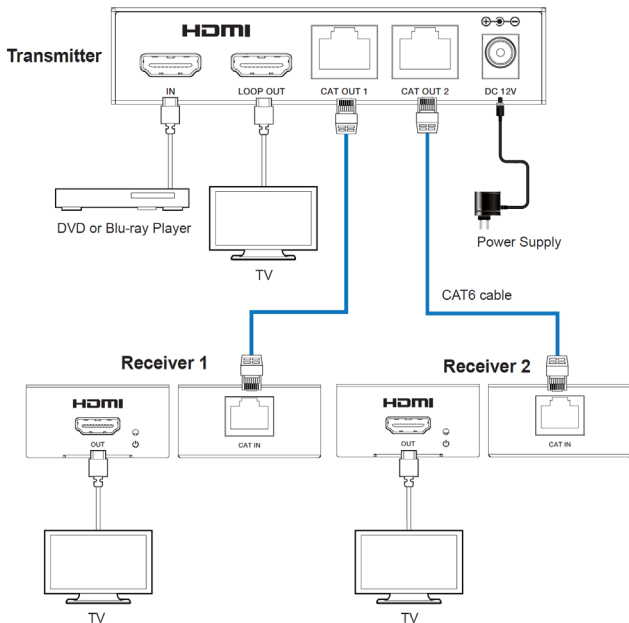
[DIP]=0011: 1920x1200,2.0CH

[DIP]=0010: 1280x800,2.0CH

[DIP]=0001: 1024x768,2.0CH

[DIP]=0000: Copy TX loop out EDID

6. Application Example



HDMITM
HIGH-DEFINITION MULTIMEDIA INTERFACE

The terms HDMI and HDMI High-Definition Multimedia interface, and the HDMI Logo are trademarks or registered trademarks of HDMI Licensing LLC in the United States and other countries.



80 Little Falls Road, Fairfield, NJ 07004

sales@comprehensiveco.com | 800.526.0242 | www.ComprehensiveCo.com